

The Garden Keepers of Trinity Village

The Garden Keepers of Trinity Village is an energetic, outgoing group of volunteers who work along the intersection of people and plants. Our plants require nurturing and regular care; our residents need spontaneous opportunities to provide care and nurture, encouraged along by a knowledgeable helping hand. The end goal is to establish a vibrant community of specialist volunteers within plant and garden care who embrace the Eden philosophy.



Our motivation is conquering boredom, helplessness and loneliness. We do this by providing beautiful indoor and outdoor spaces for residents to explore and enjoy; at the same time engaging people in whatever we are currently involved with. We would rather:

- Chat with residents, visitors and staff about gardening, nature and their own experiences
- Spontaneously assist residents in picking a flower or two; engage them with nature around us as we work
- Encourage our residents to use their five senses: sight, hearing, smell, touch and taste in any of the gardens when appropriate.

This is far more important than getting the task accomplished. Let's bring the gardens to life and bring garden life to our community.

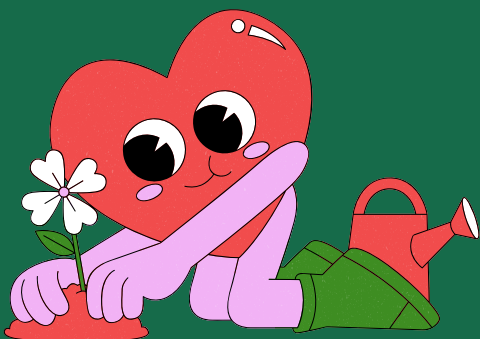
From starting seeds to assisting with honey production, the opportunities abound for you to immerse yourself in horticulture and people.

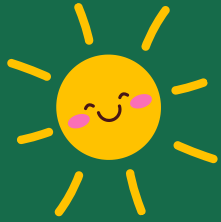
Have a look at the **Garden Keepers task list** below.

If you want to invest yourself in people and plants through the Trinity Village Horticulture Department, click on the button [Volunteer Here](#) on the previous page. That will take you over to our volunteer application form, fill it out and submit it.



Alternatively contact:
Maggie Clemens
Volunteer Co-ordinator
Trinity Village Care Centre
Phone: (519) 893-6320 ext.310
Email: Volunteer@trinityvillage.com





Garden Keepers Task List

Description

The days and hours below are a guideline for days of the week that an activity can be done and the suggested hours each visit.



1) Floral Art Cart

- a. **Summer Outdoors** **Days:** Monday – Saturday **Hours:** approx. 2 hours
 - i. Maintain vases, water jug and equipment on the cart
 - ii. Use creatively for spontaneous flower encounters with elders, visitors and staff
 - iii. Cut flowers with elders and for programs.
- b. **Winter Indoors** **Days:** Monday - Saturday **Hours:** approx. 2 hours
 - i. Prepare fresh flower vases with elders for dining tables using donated flowers

2) Berm Maintenance **Days:** Monday-Friday **Hours:** 2-3 hours

- o **Spring through Fall** (225 m long shrub bed located along Kingsway Dr. Sidewalk)
 - Weed and maintain bi-weekly Spring through Fall
 - Prune shrubs, edge berm: twice between spring and fall.

3) Seed Sowing **Days:** Monday-Friday **Hours:** 2 hours per visit

- o **February – June:**
 - Assist Horticulture Manager with sowing seeds, keeping germination records, transplanting seedlings, labelling, watering, general seedling care (mainly indoors; sometimes the greenhouse)

4) Spring Planting **Days:** Monday- Friday **Hours:** 4 hours per visit

- o **May through June:**
 - Assist Horticulture Manager with planting flower beds, pots and garden plots.
 - Organize all the empty seedling pots and trays in the shed once the planting is complete
 - Be creative with plant design if that is your thing.

5) Watering - Odd days **Days:** Monday- Friday **Hours:** 2 hours per visit

- o **Spring through Fall:**
 - Use watering wand or can and the rain barrel; refill as needed. Turn taps on and off as needed for drip irrigation system.



6) **Garden Maintenance** Days: Monday- Friday Hours: 2 hours per visit

o **Spring through Fall:**

- This is an opportunity to adopt a garden for the season.
- o Summer - weed, water, dead-head, stake and tie up unruly plants
- o Fall – tidy up beds for winter
- o Special considerations for beds with water features:
 - Whispers of Hope – check and fill basalt tower waterfall with water regularly
 - Studios Waterfall Garden – check the waterfall basin regularly

7) **Community Garden and Orchard** Days: Monday- Friday Hours: 2- 4 hours per visit

o **Spring thru fall:**

- succession plant TVCC and TVS portions of the Community Garden Plots for continuous harvest
- o Summer:
 - weed, water and harvest fruit and vegetables for the kitchens and the Studios Community Garden Market on Mondays

8) **Fall Clean-up** Days: Monday- Friday Hours: 2 hours per visit

- o Fall
 - Prepare gardens and planters for winter

9) **Programs with elders** Days: Monday- Friday Hours: 1.5-2 hours per visit

- **One on one visits** watering and plant care in the Care Centre weekly
- **One on one visits** grow plants in a tower vertically
- **One on one visits** – with a program designed for individual elders



10) **Indoor plant care** Days: Monday-Friday Hours: 2-3 hours per visit

- o Assist with care of indoor plants in the TVCC plant library as well as facilitating the sharing of plants with the elders in TVCC on a regular bi-weekly basis.

11) **Annual Spring Plant Sale** (not for 2025) Days: Monday-Sat. Hours: 2 hours per visit

- o Seedling preparation for sale: separating crop, tagging, monitoring for pests, moving plants in and out of greenhouse or other locations Days of sale (Just before May long weekend) help with sales, restocking, assisting clients etc.

12) **Beeden Honey Team** Days: Monday afternoons Hours: 2 hours per visit

- o Monthly meetings that foster the care of bees, ‘education’ and marketing of honey and wax products Possible participation in the apiary management and programming



13) **Bird Feeding Program** Days: Monday-Saturday Hours: 1-2 hours per visit

- o Clean and fill feeders 2 x per week around property during fall and winter months Fill the bins with Food. Monitor feeders for pests and other problems.