

Trinity Village

TERRACE

BEAUTIFUL LIFE LEASE **FOR SALE**

NONSMOKING HOMES/GROUNDS

PRICE IMPROVEMENT!

UNIT 26 | \$389,000

830 sq. ft. 1 Bedroom, 1 Bathroom

Common Fee: \$466.59

Property Tax: \$206.04

Reserve Fund: \$153.86

Water Heater: \$40.03

TOTAL \$866.52

About Property

Conveniently located just minutes from major highway, shops, and restaurants, this inviting Life Lease Townhome offers a bright open-concept living room, a spacious kitchen with generous cabinet space, main floor laundry, and a sun-filled primary bedroom. The unfinished basement provides the perfect opportunity to customize the space to suit your needs.

Tired of endless yard work and shoveling snow?

Come by and see how our supportive community can make life easier for you

Property Features

- Bright open-concept living and dining area
- Spacious kitchen with generous cabinet storage
- Five appliances included: fridge, stove, dishwasher, microwave, and washer/dryer
- Central air conditioning
- Reverse osmosis water system
- Main floor laundry for convenience
- Unfinished basement with potential for customization
- Recent upgrades include: Central vacuum system, two storm doors, stair lift for added accessibility, new flooring in the kitchen

Contact us today to book your viewing!

DRIEPT@TRINITYVILLAGE.COM
WWW.TRINITYVILLAGE.COM

519-893-6320
2705 KINGSWAY DR. KITCHENER, ON



Kitchen with generous cabinet storage and five appliances included

Neighbourhood Features

- 2 minutes to Fairview Park
- 2 minutes to groceries shopping
- 3 minutes to pharmacies
- 4 minutes to Fairway Station
- 5 minutes to Rockway Centre
- 5 minutes to banks
- 13 minutes from WRRM formerly Grand River Hospital



3-piece bathroom



Bright open-concept living and dining area



Unfinished basement with potential for customization

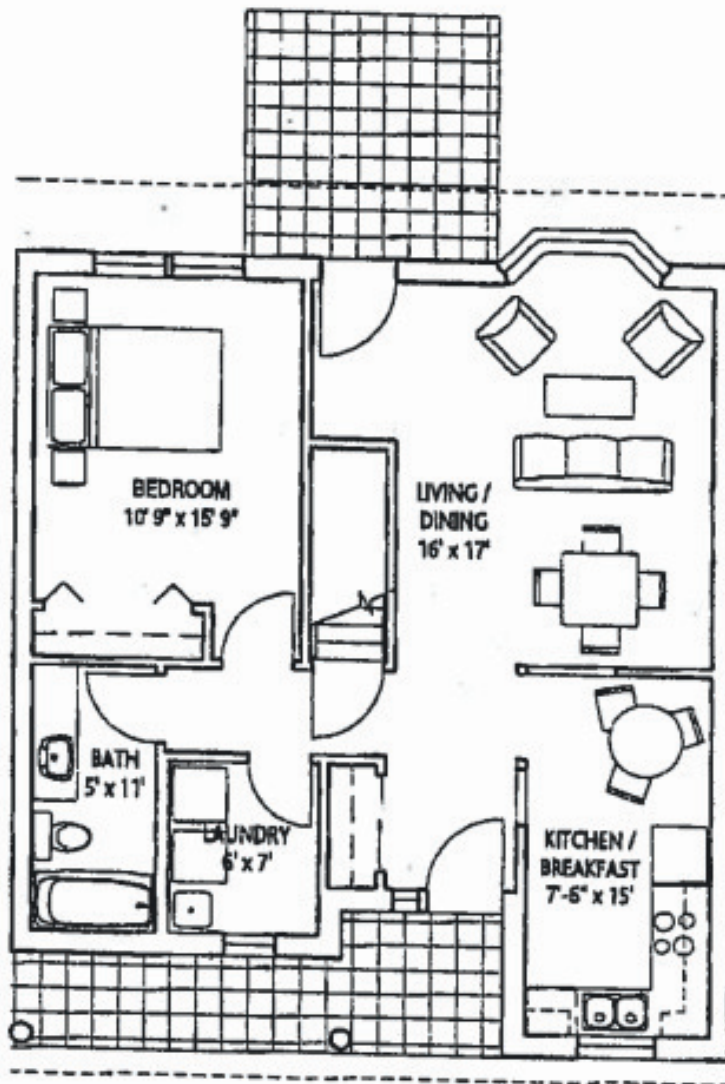


Bright and comfortable bedroom with generous space and natural light



Main floor laundry for convenience

SPRUCE



Inside Unit
830 sq. ft.



Trinity Village Terrace
Life Equity Housing
Montgomery Sisam Architects

1/8" - 1'-0"
October 21, 2002